

**CLASSIC LINE MULTIPURPOSE SHREDDER**  
**SMALL/MEDIUM OFFICES**

# KOBRA 240 C4 TURBO

Throat width:  
**9.5 in**

Shred size:  
**1/8 x 1 1/8 in cross cut**

Security level ISO/IEC 21964 (DIN 66399):  
**P-4 O-3 T-4 E-3 F-1**

Paper capacity\*:  
**up to 26 sheets**

Shreddable materials:  
**Paper, Credit cards, Smart cards, CDs/DVDs, Floppy-disks, Films**

Speed:  
**7 ft/min**

Waste bin capacity:  
**9.5 gal**

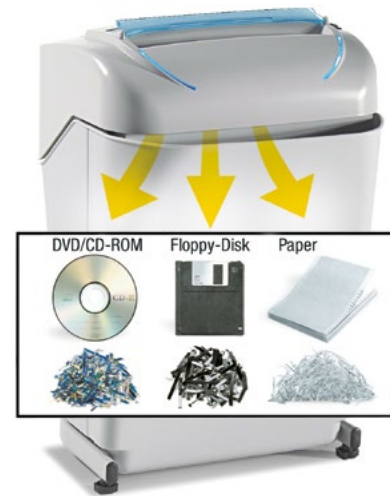
Noise level:  
**61 dba**

Voltage:  
**115 Volt / 60 Hz**

Power:  
**3/4 HP**

Dimensions (WxDxH):  
**14.5 x 13 x 22 in**

Weight:  
**31 lbs**



TRADE AGREEMENT ACT  
 (TAA) COMPLIANT

\* Capacity varies on supply power, weight, quality and grain of paper, operating temperature and blade lubrication

## MAIN FEATURES

Cross-cut shredder equipped with heavy duty chain drive system with metal gears. Kobra 240 C4 TURBO featuring the "Turbo Boost System" for extra-shredding capacity can shred up to 26 sheets in one pass and eliminate paper jams. Carbon hardened cutting knives unaffected by staples and clips. Motor thermal protection: 24 hour continuous duty operations without overheating or duty cycles. Energy Smart System with optical illuminated indicators for power saving stand-by mode and environmental protection. Equipped with a removable waste bin for easy empty operations, does not require lifting of the cutting head.

**TURBO BOOST SYSTEM:** by pressing the Turbo switch the shredding capacity of the machine is increased by 30%

**SUPER POTENTIAL POWER UNIT:** heavy duty chain drive system with steel gears

**CONTINUOUS DUTY SHREDDING:** 24 hour continuous duty motor without overheating and duty cycles. Motor thermal protection.

**CARBON HARDENED STEEL CUTTING KNIVES** unaffected by staples and clips

**ENERGY SMART®:** power saving stand-by mode with optical illuminated indicators

**START & STOP:** automatic start and stop through electronic eyes with stand-by function

**SAFETY STOP:** automatically stops at bin removal

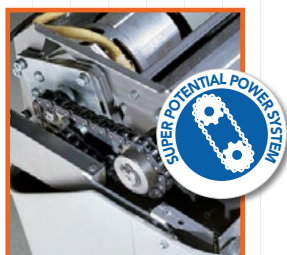
**CONVENIENT REMOVABLE WASTE BIN** for easy empty operations: does not require lifting of the cutting head.

Equipped with a mechanism to separate shredded paper from plastic shreds.

**ECO-FRIENDLY:** does not require plastic bags.



**ENERGY SMART®**  
 Power management system for power saving stand-by mode with illuminated indicators



**SUPER POTENTIAL POWER SYSTEM:** heavy duty chain drive system with steel gears



**TURBO BOOST SYSTEM:** by pressing the Turbo switch the shredding capacity of the machine is increased by 30%



**CONVENIENT REMOVABLE WASTE BIN** for easy empty operations: does not require lifting of the cutting head. Equipped with a mechanism to separate shredded paper from plastic shreds.  
**ECO-FRIENDLY:** does not require plastic bags.